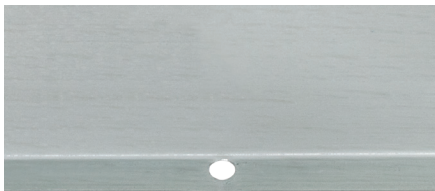


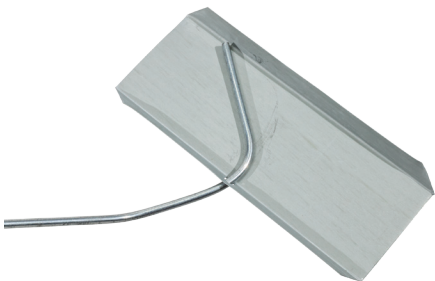


20" G Series Assembly Instructions



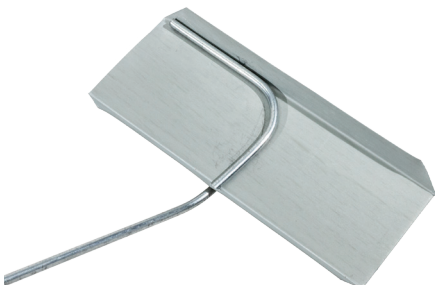
STEP 1

Locate hole on the bottom tab on the plate.



STEP 2

Insert the angled end of the wire thru the hole on the plate.



STEP 3

Align the top of the marking plate with wire - the bend angle of the wire may need to be adjusted to get a proper fit with the plate.



STEP 4

Crimp the top tab of the marking plate over the wire to secure the plate in place.



STEP 5

Your 20" G Series marker is now ready to use!